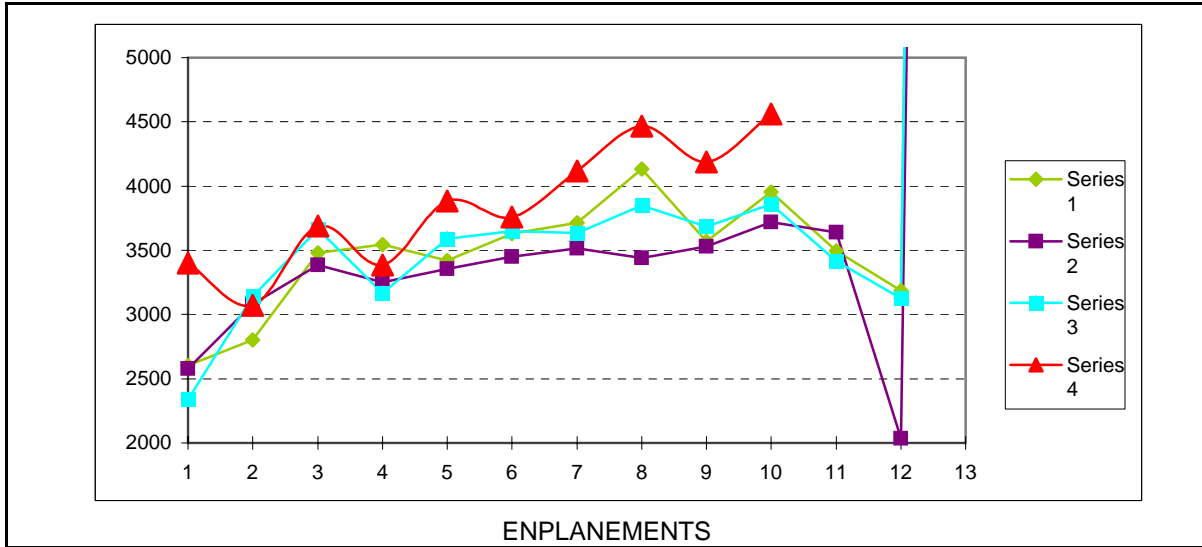


Pangborn Memorial Airport  
Activity Report



	October 2006 MTD YTD		October 2007 MTD YTD		
<b>Enplaned Passengers</b>					
Horizon Air	3,794	34,092	4,535	38,008	
Executive Flt	63	478	27	515	
<b>Total</b>	<b>3,857</b>	<b>34,570</b>	<b>4,562</b>	<b>38,523</b>	<b>11%</b>

<b>Car Rental Agencies</b>					
Budget	\$24,717	\$280,571	\$25,570	\$255,154	
Hertz	\$42,082	\$391,569	\$43,856	\$446,511	
Enterprise	\$0	\$0	\$12,602	\$23,406	
<b>Total</b>	<b>\$66,799</b>	<b>\$672,140</b>	<b>\$82,028</b>	<b>\$725,071</b>	<b>8%</b>

<b>Parking Lot</b>	\$13,038	\$101,705	\$19,106	\$149,506	47%
--------------------	----------	-----------	----------	-----------	-----

Hangars	
Glider Club	10
AP Hangar	1
AP T-Hangars -	31
Aircraft	30
Storage	1
Empty	0
Halliday T-Hgr	10
Private Hangars	45
Executive Flight	15
<b>Total</b>	<b>111</b>

Tie Downs	
Wings	8
Private	5
Gliders	0
USFS	4
<b>Total</b>	<b>17</b>
<b>Total Aircraft</b>	<b>128</b>