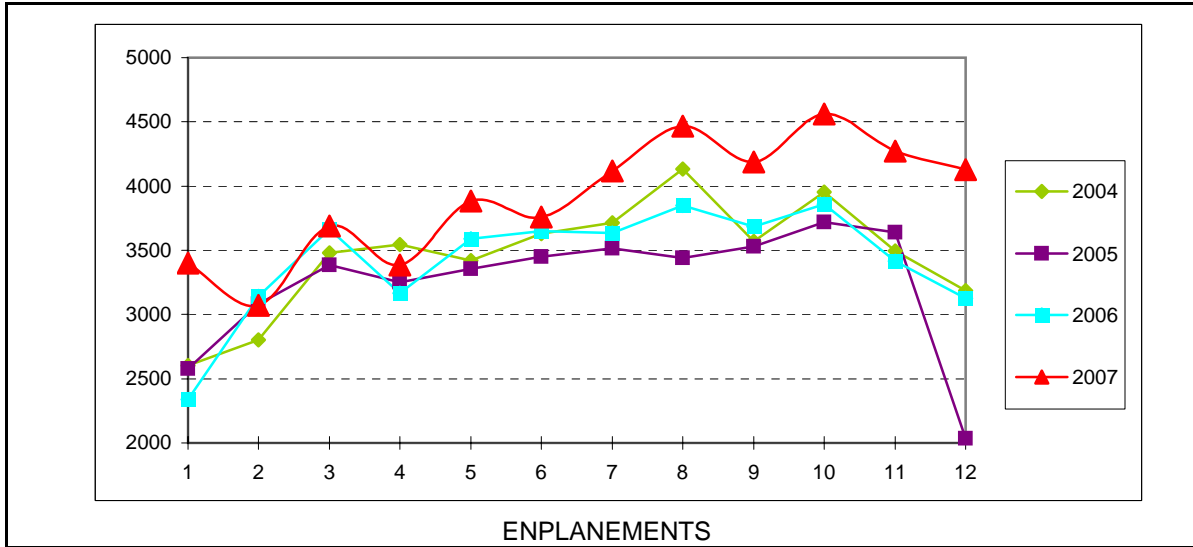


Pangborn Memorial Airport  
Activity Report



Enplaned Passengers	December 2006 MTD YTD		December 2007 MTD YTD		
	Horizon Air	3,081	40,554	4,099	
Executive Flt	45	559	30	575	
<b>Total</b>	<b>3,126</b>	<b>41,113</b>	<b>4,129</b>	<b>46,925</b>	<b>14%</b>

Car Rental Agencies						
Budget	\$22,535	\$325,105	\$16,170	\$294,051		
Hertz	\$35,781	\$462,438	\$36,434	\$522,808		
Enterprise	\$0	\$0	\$5,445	\$49,481		
<b>Total</b>	<b>\$58,316</b>	<b>\$787,543</b>	<b>\$58,049</b>	<b>\$866,340</b>		<b>10%</b>

<b>Parking Lot</b>	<b>\$11,231</b>	<b>\$125,855</b>	<b>\$13,945</b>	<b>\$180,974</b>	<b>44%</b>
--------------------	-----------------	------------------	-----------------	------------------	------------

Hangars	
Glider Club	10
AP Hangar	1
AP T-Hangars -	31
Aircraft	29
Storage	1
Empty	1
Halliday T-Hgr	10
Private Hangars	45
Executive Flight	15
<b>Total</b>	<b>110</b>

Tie Downs	
Wings	8
Private	5
Gliders	0
USFS	4
<b>Total</b>	<b>17</b>
<b>Total Aircraft</b>	<b>127</b>