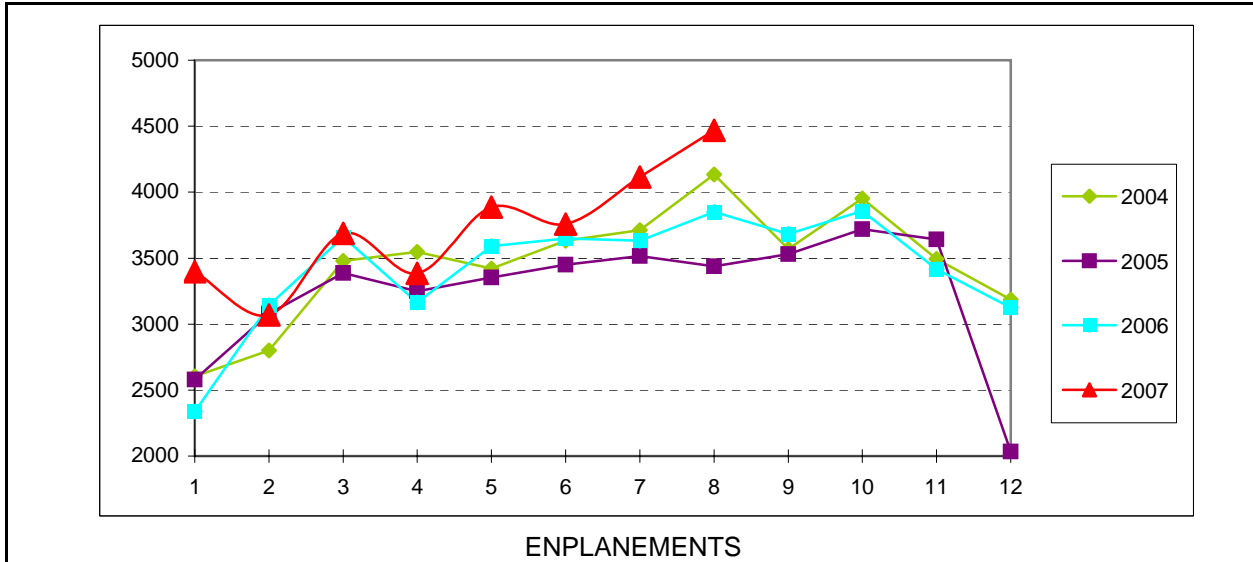


Pangborn Memorial Airport  
Activity Report



Enplaned Passengers	August 2006		August 2007		
	MTD	YTD	MTD	YTD	
Horizon Air	3,827	26,663	4,422	29,338	
Executive Flt	23	366	47	435	
<b>Total</b>	<b>3,850</b>	<b>27,029</b>	<b>4,469</b>	<b>29,773</b>	10%

Car Rental Agencies	August 2006		August 2007		
Budget	\$43,901	\$215,940	\$37,950	\$203,083	
Hertz	\$79,078	\$282,585	\$66,805	\$352,272	
Enterprise	\$0	\$0	\$10,804	\$10,804	
<b>Total</b>	<b>\$122,979</b>	<b>\$498,525</b>	<b>\$115,559</b>	<b>\$566,159</b>	14%

Parking Lot	August 2006		August 2007		
	\$8,932	\$79,167	\$13,094	\$116,490	47%

Hangars	
Glider Club	10
AP Hangar	1
AP T-Hangars -	31
Aircraft Storage	31
Empty	0
Halliday T-Hgr	0
Private Hangars	10
Executive Flight	45
<b>Total</b>	<b>112</b>

Tie Downs	
Wings	8
Private	5
Gliders	0
USFS	4
<b>Total</b>	<b>17</b>
<b>Total Aircraft</b>	<b>129</b>

	2001	2002	2003	2004	2005	2006	2007
Jan	3519	2969	2328	2605	2580	2337	3398
Feb	3783	3261	3149	2800	3080	3143	3070
Mar	4665	3954	3268	3480	3387	3662	3689
Apr	4262	3591	3231	3547	3249	3164	3386
May	4417	3601	3544	3421	3353	3590	3886
Jun	4425	3686	3941	3632	3450	3650	3759
Jul	4713	3867	3860	3713	3515	3633	4116
Aug	4927	3859	3752	4133	3439	3850	4469
Sep	2969	3609	3442	3570	3531	3684	
Oct	3628	3754	3920	3952	3719	3857	
Nov	3160	3234	3319	3495	3642	3417	
Dec	3114	3026	2817	3187	2035	3126	
	47582	42411	40571	41535	38980	41113	29773